



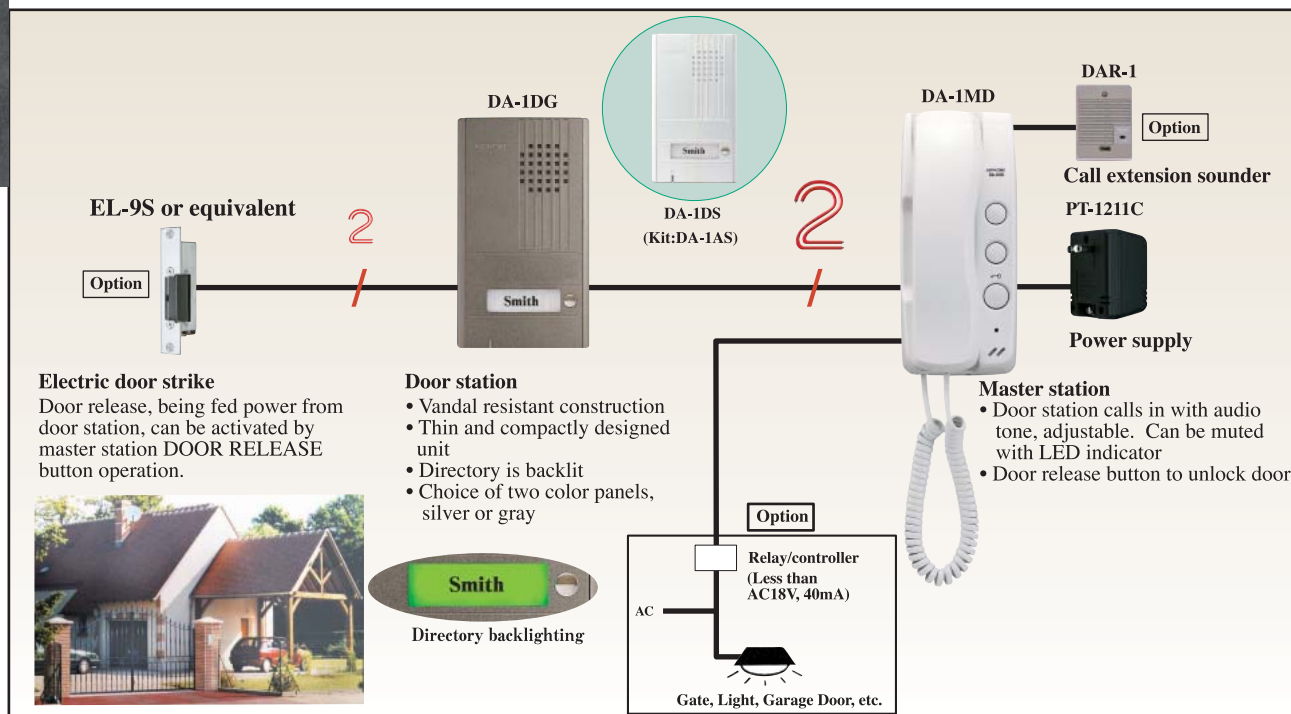
TWO-WIRE ELECTRIC LOCK DOOR PHONE KIT

Provides Entry Security for Your Building

DA-1AG



Simplified Two-Wire Door Entry Kit

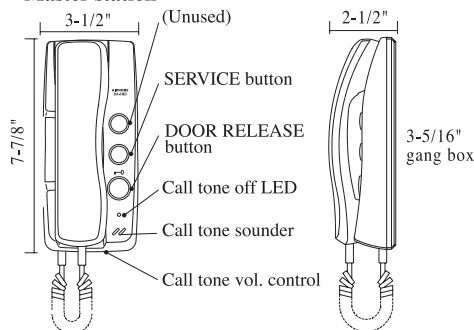


System features

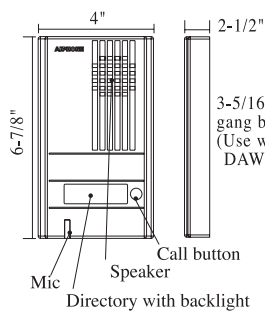
- Connect Electric Door Strike with same two wires from Door station. Requires no extra power supply for electric door strike.
- Existing doorbell or chime wires can be utilized (Disconnect from transformer)
- Master station is equipped with DOOR RELEASE and one FUNCTION button to turn on entrance light, etc.
- Optional call extension sounder

Names & Dimensions

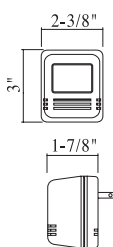
•Master station



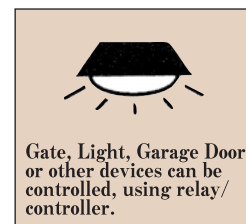
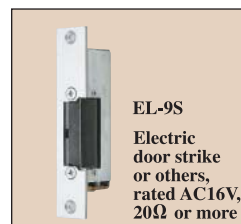
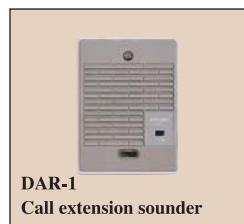
•Door station



•Power supply



Options



Specifications

- Power source: AC 15V, supplied from Power supply
- Calling: Electronic tone(while the button is depressed). w/adj. Volume or muted
- Communication: Simultaneous with handset.
- Weight: DA-1MD: approx. 0.82lbs. DA-1DG: approx. 0.60lbs. PT-1211C:0.88lbs.
- Wiring: 2 wires, polarized from door to DA-1MD
- Wiring distance: (1)Door Strike (2)Door station (3)Master station (4)Power supply

| | AWG22 | AWG20 | AWG18 |
|-----------------|-------|-------|--------|
| (1)-(2)-(3)-(4) | 360' | 660' | 1,020' |
| (3)-(4) | 180' | 330' | 510' |

- DA-1AG Kit consists of DA-1DG, DA-1MD & PT-1211C.
- PT-1211C power supply is designed for exclusive use of DA-1MD.

Distributed by:

AIPHONE[®]
Providing Peace of Mind

<http://www.aiphone.com/>
Printed in Japan