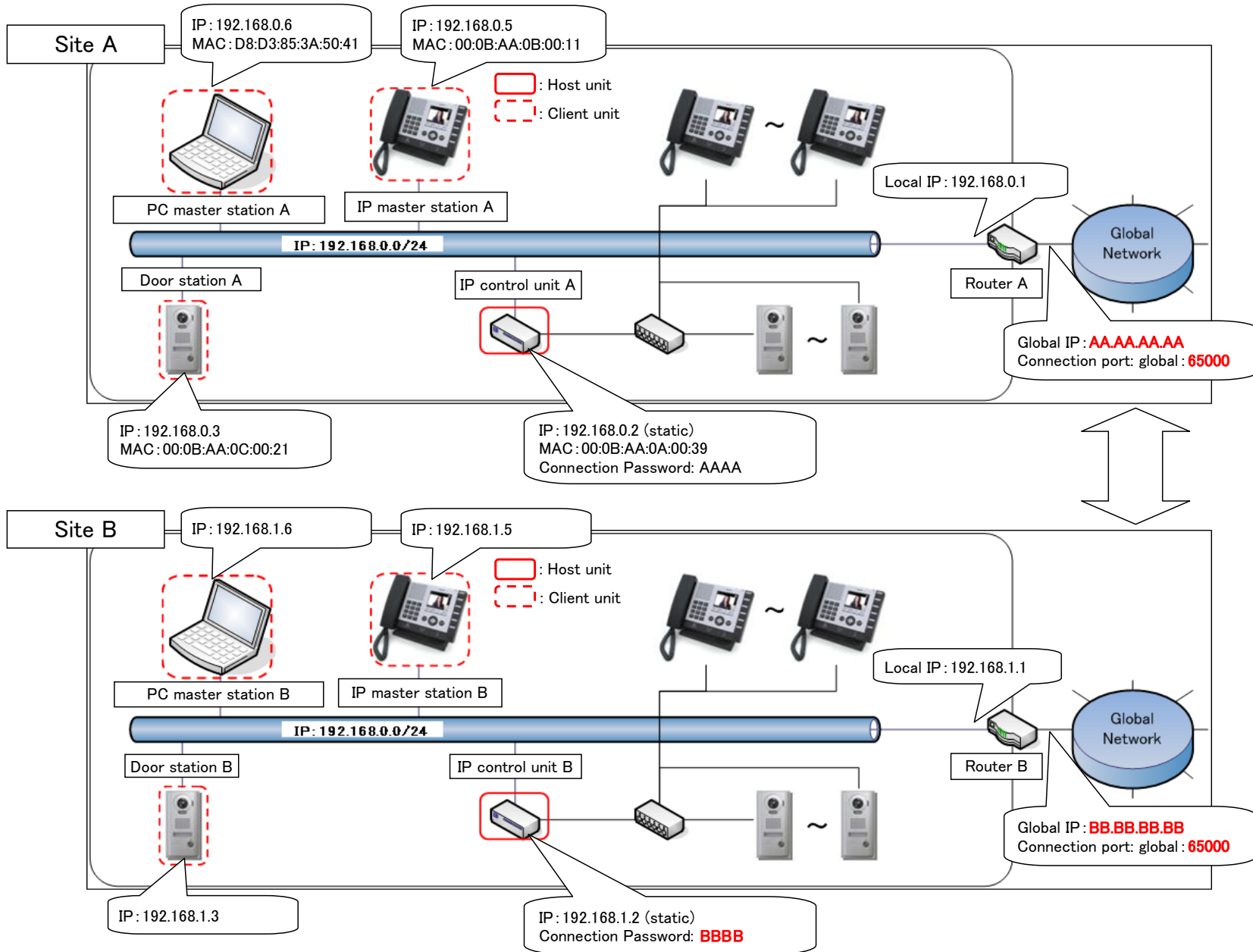


When using a router other than a UPnP-compatible router for which an operation check was performed

The following describes the network settings for connecting sites A and B.

- 1) Setting a broadband router that has DHCP server function
- 2) Individual network setting for the host unit
- 3) Common network setting for the host unit
- 4) Individual network setting for the client units
- 5) Network setting for a PC master station.
- 6) IP unit registration for the host unit
- 7) Port forwarding setting for "site A" and "router A"
- 8) Settings for "site B"
- 9) Site connection setting for "site A"
- 10) Site connection setting for "site B"
- 11) Other settings for "site A" and "site B"

[Configuration diagram]



1) Setting a broadband router that has DHCP server function

Set the router so that the MAC address: **00:0B:AA:0A:00:39** of "IS-IPC" that is to be used as the "host unit" is assigned to the static IP address: **192.168.0.2**.
 * For the setting method, refer to the instruction manual for the broadband router.

2) Individual network setting for the host unit

Access "<https://192.168.0.2>" from Microsoft Internet Explorer on your PC.
 Log on in the administrator mode by following the on-screen instructions.
 Check "Host unit" and enter a preferred name for the system at "System name" in the [Network setting: Individual] window.

Network setting: Individual

IP version: IPv4

Host unit setting:
 Host unit Client unit

Host unit IP address:

System name:

Also, enter the port number to be used for "Connection port" and password to be used for "Connection Password".

- * Both the "Connection port" and "Connection Password" are common in "site A".
- * Enter a connection port that will be accessed from outside, because the value set for "Connection port" should be in common with "Connection port: global".

Connection port:

Connection Password:

Finally, click the "Temporarily stored" button to temporarily save the current settings.

Temporarily stored

Once saved, a message is displayed: "The settings are not applied until you press the update button".

The settings are not applied until you press the update button.

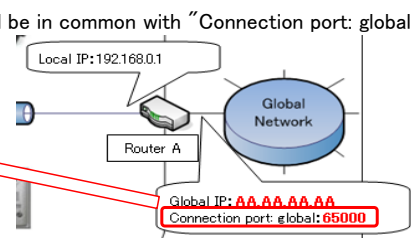
Click the "Update" button in the [Updating the system] window to save the past set contents.

Updating the system

*Do you want to update the system with temporarily stored data?

A message is displayed: "The system has been updated successfully. The system will restart in 1 minute. Do not turn off the power while restarting."

The system has been updated successfully. The system will restart in 1 minute.
 Do not turn off the power while restarting.



3) Common network setting for the host unit

Access "https://192.168.0.2" from Microsoft Internet Explorer on your PC.

Log on in the administrator mode by following the on-screen instructions.

When using a router other than a UPnP-compatible router for which operation check was performed, set "UPnP" to OFF in the [Network setting: Common] window.

Enter the global IP address of the broadband router you use in the "Global IP address" field.

* It corresponds to the global IP address of the router A in the configuration diagram. "AA.AA.AA.AA" is a dummy value. To actually configure, enter normal figures in this field.

"Connection port: global" is set with the same value as "Connection port" automatically.

Enter a multicast address in each of the "Multicast address" fields that is within the setting range.

Enter the audio/video port numbers that will be used in this site in the "Audio/video port" fields.

Network setting: Common

UPnP OFF ON

Global IP address

Connection port: global

System data port 43998 / 43999

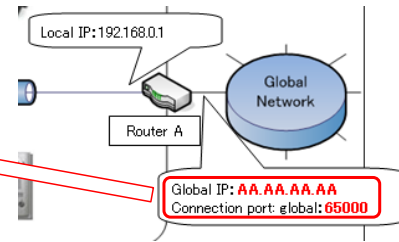
IP unit search multicast address 239.197.40.41

IP unit search multicast port 41900

Multicast address *Required

1	<input type="text" value="239.0.1.1"/>
2	<input type="text" value="239.0.1.2"/>
3	<input type="text" value="239.0.1.3"/>
4	<input type="text" value="239.0.1.4"/>
5	<input type="text" value="239.0.1.5"/>

Audio/video port *Required -



1 - 5:
 Multicast address for paging a pilot zone
 Multicast address for paging in this site
 Multicast address for chime
 Multicast address for video
 Multicast address for video to call a pilot door station

50800 - 50813:
 50800: Multicast proxy port number for paging a pilot zone (Normal)
 50801: Multicast proxy port number for paging a pilot zone (Priority)
 50802: Multicast proxy port number for paging a pilot zone (Urgent)
 50803: Multicast proxy port number for paging a pilot zone (Broadcast)
 50804: Multicast proxy port number for video to call a pilot door station (Normal)
 50805: Multicast proxy port number for video for calling a pilot door station (Priority)
 50806: Multicast proxy port number for video for calling a pilot door station (Priority)
 50807: Multicast port number for paging a pilot zone (Normal)
 50808: Multicast port number for paging a pilot zone (Priority)
 50809: Multicast port number for paging a pilot zone (Urgent)
 50810: Multicast port number for paging a pilot zone (Broadcast)
 50811: Multicast port number for video video for calling a pilot door station (Normal)
 50812: Multicast port number for video for calling a pilot door station (Priority)
 50813: Multicast port number for video for calling a pilot door station (Urgent)

Finally, click the "Temporarily stored" button to temporarily save the current settings.

Once saved, a message is displayed: "The settings are not applied until you press the update button".

The settings are not applied until you press the update button.

Click the "Update" button in the [Updating the system] window to save the past set contents.

Updating the system

*Do you want to update the system with temporarily stored data?

A message is displayed: "The system has been updated successfully. The system will restart in 1 minute. Do not turn off the power while restarting."

The system has been updated successfully. The system will restart in 1 minute.

Do not turn off the power while restarting.

4) Individual network setting for the client units

Access "https://192.168.0.2" from Microsoft Internet Explorer on your PC.

Log on in the administrator mode by following the on-screen instructions.

* Connect an IP unit other than the "host unit" to the router.

Click [IP unit search].

The connected "client units" are displayed in the [IP unit search] window.

* If the connected "client units" are not displayed, click the "IP unit search" button and wait until they are displayed.

To set each of the IP units displayed in the "Search result" list, check the target unit and then click the "Open the setting window" button.

IP unit search

Search result

	Station type	MAC address	Unit name
<input checked="" type="checkbox"/>	IP master station	00:0B:AA:0B:00:11	
<input type="checkbox"/>	IP video door station	00:0B:AA:0C:00:21	

The setting window for the corresponding IP unit opens in a separate window.

Log on in the administrator mode by following the on-screen instructions.

Click "Client unit" in the [Network setting : Individual] window and enter 192.168.0.2, the IP address of the host unit in the "Host unit IP address" field.

Network setting: Individual

IP version

Host unit setting

Host unit Client unit

Host unit IP address *Required

Also, enter the port number to be used for "Connection port" and password to be used for "Connection Password".

* Both the "Connection port" and "Connection Password" are common in "site A". Enter the connection port number and password identical with those set for "Host unit".

Connection port

Connection Password

Finally, click the "Temporarily stored" button to temporarily save the current settings.

Once saved, a message is displayed: "The settings are not applied until you press the update button".

The settings are not applied until you press the update button.

Click the "Update" button in the [Updating the system] window to save the past set contents.

Updating the system

*Do you want to update the system with temporarily stored data?

A message is displayed: "The system has been updated successfully. The system will restart in 1 minute. Do not turn off the power while restarting."

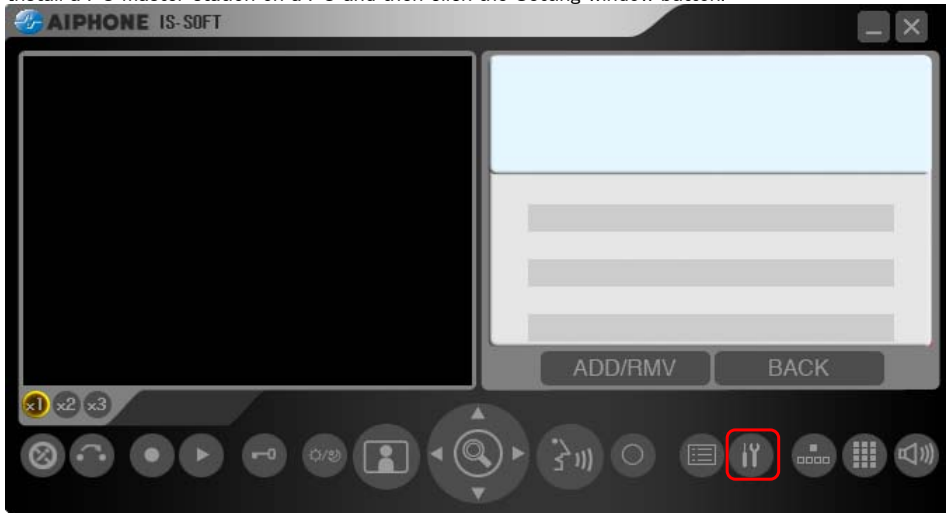
The system has been updated successfully. The system will restart in 1 minute.

Do not turn off the power while restarting.

Set the other IP units in the same way.

5) Network setting for a PC master station.

Install a PC master station on a PC and then click the Setting window button.



Click on the [Network] tab in the Setting window.

Enter **192.168.0.2**, the IP address of the host unit in the field of "IP Address".

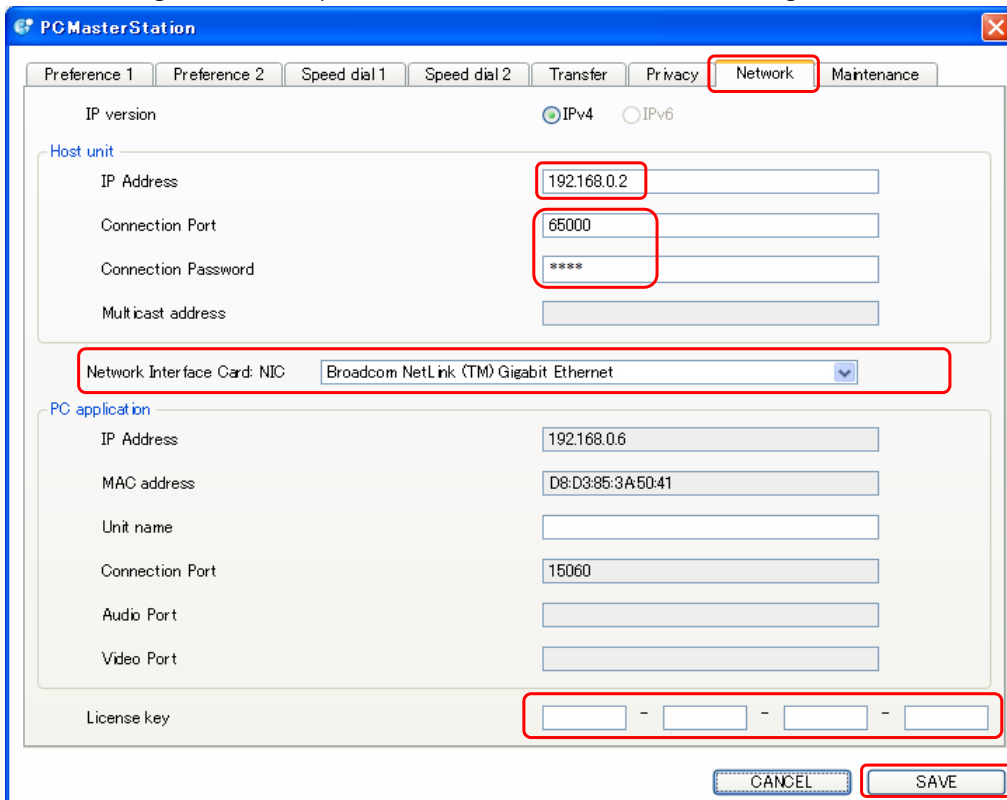
Also, enter the port number to be used for "Connection port" and password to be used for "Connection Password".

* Both the "Connection port" and "Connection Password" are common in "site A". Enter the connection port number and password identical with those set for "Host unit".

Select the NIC used on the PC for "Network Interface Card: NIC".

Enter the license key of the PC master station for "License key".

When the settings have been completed, click the "SAVE" button to save the setting results.



6) IP unit registration for the host unit

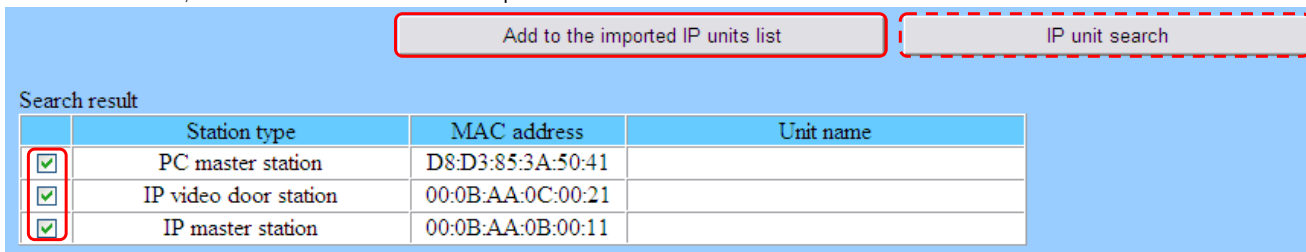
Access "<https://192.168.0.2>" from Microsoft Internet Explorer on your PC.

Log on in the administrator mode by following the on-screen instructions.

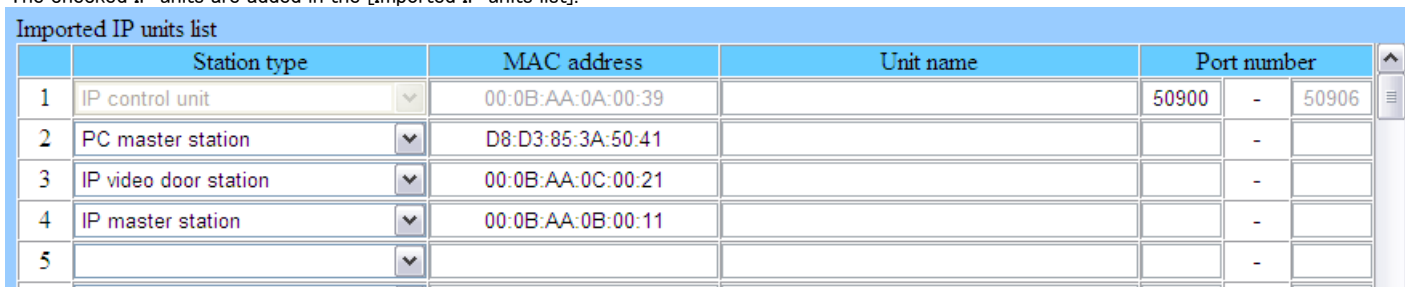
Click [IP unit registration] to display the connected IP units in the "Search result" list.

* If the connected IP units are not displayed, click the "IP unit search" button and wait until they are displayed.

Check each IP unit, and then click the "Add to the imported IP units list" button.



The checked IP units are added in the [Imported IP units list].



If the "Port number auto-setting" button is clicked, the ports to be set are automatically entered.

Imported IP units list

	Station type	MAC address	Unit name	Port number
1	IP control unit	00:0B:AA:0A:00:39		50900 - 50906
2	PC master station	D8:D3:85:3A:50:41		50907 - 50909
3	IP video door station	00:0B:AA:0C:00:21		50910 - 50912
4	IP master station	00:0B:AA:0B:00:11		50913 - 50915
5				

"Port number"
 7 ports for "IP control unit"
 50900: Audio 1 multicast port
 50901: Audio 2 multicast port
 50902: Audio 3 multicast port
 50903: Video multicast port
 50904: Audio 1 external port number
 50905: Audio 2 external port number
 50906: Video external port
 3 ports for "PC master station"
 50907: Audio 1 multicast port
 50908: Audio 1 external port number
 50909: Video external port
 3 ports for "IP video door station"
 50910: Audio 1 multicast port
 50911: Video multicast port number
 50912: Audio 1 external port number
 3 ports for "IP master station"
 50913: Audio 1 multicast port
 50914: Audio 1 external port number
 50915: Video external port

Finally, click the "Temporarily stored" button to temporarily save the current settings.

Once saved, a message is displayed: "The settings are not applied until you press the update button".
 The settings are not applied until you press the update button.

Click the "Update" button in the [Updating the system] window to save the past set contents.

Updating the system

*Do you want to update the system with temporarily stored data?

A message is displayed: "The system has been updated successfully. The system will restart in 1 minute. Do not turn off the power while restarting."
 The system has been updated successfully. The system will restart in 1 minute.
 Do not turn off the power while restarting.

7) Port forwarding setting for "site A" and "router A"

Access "https://192.168.0.2" from Microsoft Internet Explorer on your PC.
 Log on in the administrator mode by following the on-screen instructions.
 Click [IP unit registration], and then click the "Port forwarding setting" button.

The "Port forwarding setting" data is now displayed in another window.

* If the destination IP address is not displayed, click the "Reload" button with all of the IP units activated, and wait until it is displayed.

Port forwarding setting

*For the router setting information, see the operation manual supplied with the unit.

*Source IP address : AA.AA.AA.AA

Source Port	Destination IP Address	Destination Port	Protocol
65000	192.168.0.2	65000	UDP
50800 - 50803	192.168.0.2	50800 - 50803	UDP
50804 - 50806	192.168.0.2	50804 - 50806	UDP

*Source IP address : AA.AA.AA.AA

Source Port	Destination IP Address	Destination Port	Protocol	Unit name
50904 - 50906	192.168.0.2	50904 - 50906	UDP	
50908 / 50909	192.168.0.6	50908 / 50909	UDP	
50912	192.168.0.3	50912	UDP	
50914 / 50915	192.168.0.5	50914 / 50915	UDP	

The above is the information needed for the port forwarding settings on "router A".
 Configure the port forwarding settings by following the instruction manual for "router A".

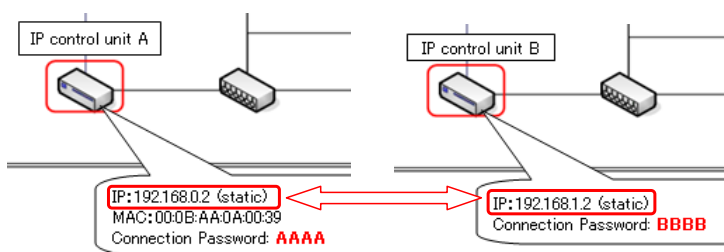
* To make connections among sites, the router needs to have the NAPT (IP address translation and port number translation) function.

No.	Source IP address	Source Port	Destination IP address	Destination Port	Protocol
	Global IP	Global port	Local IP	Local port	
1	AA.AA.AA.AA	65000	192.168.0.2	65000	UDP
2	AA.AA.AA.AA	50800	192.168.0.2	50800	UDP
3	AA.AA.AA.AA	50801	192.168.0.2	50801	UDP
4	AA.AA.AA.AA	50802	192.168.0.2	50802	UDP
5	AA.AA.AA.AA	50803	192.168.0.2	50803	UDP
6	AA.AA.AA.AA	50804	192.168.0.2	50804	UDP
7	AA.AA.AA.AA	50805	192.168.0.2	50805	UDP
8	AA.AA.AA.AA	50806	192.168.0.2	50806	UDP
9	AA.AA.AA.AA	50904	192.168.0.2	50904	UDP
10	AA.AA.AA.AA	50905	192.168.0.2	50905	UDP
11	AA.AA.AA.AA	50906	192.168.0.2	50906	UDP
12	AA.AA.AA.AA	50908	192.168.0.6	50908	UDP
13	AA.AA.AA.AA	50909	192.168.0.6	50909	UDP
14	AA.AA.AA.AA	50912	192.168.0.3	50912	UDP
15	AA.AA.AA.AA	50914	192.168.0.5	50914	UDP
16	AA.AA.AA.AA	50915	192.168.0.5	50915	UDP

8) Settings for "site B"

Configure the settings for each IP unit in "site B" in the same way as "site A".

* Set an IP address for the "host unit" in "site B" that is different from the IP address for the "host unit" in "site A".
 (In this system, use an IP address other than "192.168.0.2" for the "host unit" in "site B".)



9) Site connection setting for "site A"

Access "https://192.168.0.2" from Microsoft Internet Explorer on your PC.
Log on in the administrator mode by following the on-screen instructions.
Click [Area/Site registration].

In the [Area/Site registration] window, enter the name for "site B", select "Site" at "Area/Site", and enter values for "IP Address", "Port number" and "Connection Password" that are identical with the values set in the settings for "site B".

- * The value of "IP Address" in [Area/Site registration] for "site A" and the value of "Global IP address" in [Network setting: Common] for "site B" should be identical.
- * The value of "Port number" in [Area/Site registration] for "site A" and the value of "Connection port: global" in [Network setting: Common] for "site B" should be identical.
- * The value of "Connection Password" in [Area/Site registration] for "site A" and the value of "Connection Password" in [Network setting: Individual] for "site B" should be identical.

Site A

System setting Temporarily stored

Area/Site registration
Area/Site Name: 1-24 Alphanumeric characters
Port number: 1024-65535
Connection Password: 1-16 Alphanumeric characters
*: Required

Number	Area/Site Name	Area/Site	IP Address	Port number	Connection Password	Door release
01*	Area01	Area				ON OFF
02	SiteB	Site	BB.BB.BB.BB	65000	BBBB	ON OFF
03		Area				ON OFF

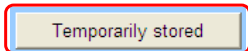
Local IP: 192.168.1.1
Global IP: BB.BB.BB.BB
Connection port: global: 65000

IP: 192.168.1.2 (static)
Connection Password: BBBB

Network setting: Common
UPnP: OFF ON
Global IP address: BB.BB.BB.BB
Connection port: global: 65000

Network setting: Individual
Connection Password: BBBB

Finally, click the "Temporarily stored" button to temporarily save the current settings.



Once saved, a message is displayed: "The settings are not applied until you press the update button".
The settings are not applied until you press the update button.

Click the "Update" button in the [Updating the system] window to save the past set contents.

Updating the system

*Do you want to update the system with temporarily stored data? Update

A message is displayed: "The system has been updated successfully. The system will restart in 1 minute. Do not turn off the power while restarting."
The system has been updated successfully. The system will restart in 1 minute.
Do not turn off the power while restarting.

10) Site connection setting for "site B"

Access "https://192.168.1.2" from Microsoft Internet Explorer on your PC.
Log on in the administrator mode by following the on-screen instructions.
Click [Area/Site registration].

In the [Area/Site registration] window, enter the name for "site A", select "Site" at "Area/Site", and enter values for "IP Address", "Port number" and "Connection Password" that are identical with the values set in the settings for "site A".

- * The value of "IP Address" in [Area/Site registration] for "site B" and the value of "Global IP address" in [Network setting: Common] for "site A" should be identical.
- * The value of "Port number" in [Area/Site registration] for "site B" and the value of "Connection port: global" in [Network setting: Common] for "site A" should be identical.
- * The value of "Connection Password" in [Area/Site registration] for "site B" and the value of "Connection Password" in [Network setting: Individual] for "site A" should be identical.

Site B

System setting Temporarily stored

Area/Site registration
Area/Site Name: 1-24 Alphanumeric characters
Port number: 1024-65535
Connection Password: 1-16 Alphanumeric characters
*: Required

Number	Area/Site Name	Area/Site	IP Address	Port number	Connection Password	Door release
01*	Area01	Area				ON OFF
02	SiteA	Site	AA.AA.AA.AA	65000	AAAA	ON OFF
03		Area				ON OFF

Local IP: 192.168.0.1
Global IP: AA.AA.AA.AA
Connection port: global: 65000

IP: 192.168.0.2 (static)
MAC: 00:0B:AA:0A:00:39
Connection Password: AAAA

Network setting: Common
UPnP: OFF ON
Global IP address: AA.AA.AA.AA
Connection port: global: 65000

Network setting: Individual
Connection Password: AAAA

11) Other settings for "site A" and "site B"

Configure the call settings among sites etc., in [Remote site pilot call setting] etc. separately.